



- ▶ **Pet Preform Molds**
- ▶ **Cap Molds**
- ▶ **Blow Molds**
- ▶ **Thin Wall Molds**

COMPANY PROFILE

Established in the year 2010, at Delhi, India, we "Ashoka Tools", are recognized as one of the leading manufacturer, exporter and supplier of superior quality Injection Cavity Inserts, Pet Injection Mold. This range consists of Preform Injection Mold, Jar Blow Mold, Jar Blow Mold, Blow Mold, Plastic Injection Mold etc. Along with this we are offering of Injection Mold Repair Service. These molds are designed and developed at our sophisticated manufacturing unit using supreme grade factor inputs and latest technology in compliance with set industrial norms.

The used raw material is procured from some of the reliable and certified vendors of the industry. The production process of these products is carried out in adherence to the international quality standards to ensure that the finished range is flawless in all aspects. These products are widely acclaimed among our valuable clients for their dimensional accuracy, robust construction, optimum functionality, reliable performance, longer service life and easy operation.

Apart from this, the offered products are available in various sizes, patterns and dimensions to suit the varied requirements of our prestigious clients. In addition to this, the offered products can also be availed by clients from us at the most affordable price range.

QUALITY TESTING

Ashoka Tools has a rigorous in-process quality inspection and testing standard to ensure precision and accuracy of its molds & hot runner components

- Finest Quality Mold steel is selected to ensure excellent corrosion and wear resistance
- All molds assure components with flashless split-lines, maximum concentricity, consistent weight and dimensional stability
- Each molds is tested under production conditions to assure optimal performance and trouble free start-up at customer's end



VISION

To be the most preferred supplier to our customers from concept to delivery in development of tools and value-added services, with innovative and sound manufacturing solutions, in the chosen markets on a global platform

DESIGN & ENGINEERING

Ashoka Tools has a well-equipped R&D Center working on latest. CAD/CAM/CAE Workstations. It is capable of turning complex customer requirements into achievable solutions with the highest quality standards.

- Advance design and prototyping capabilities
- Use of latest software for product design, mold design, mold analysis and molding process simulations
- Advance design system ensure optimal thickness, weight, stretchability, thread fitment, etc. to suit customer needs
- Fully balanced hot runner system for uniform melt flow and pressure in all the cavities
- Technical embedded cooling channel layout & turbulent water flow ensure consistent cooling and efficient heat transfer





PET & PREFORM MOLDS

Our Molds Manufacturing unit has an advanced setup of CNC/VMC/EDM machines of Best Quality Make for manufacturing Superior Quality molds base and mold inserts using Best Quality of Raw Material. The finished molds base and inserts are assembled in a dust proof assembly are and further tested for functionality and performance. Our in-house quality testing center is equipped with necessary resources and equipment for preform / bottle testing . 3d Profile Projectors for in-process checks and end product testing.





ASB SPARES



HOT RUNNER SPARES



MOLD SPARES



CAP MOLDS

Ashoka tools design and manufacture cap and closure Mold for beverage industry. Molds are optimized for high-speed, high cavitations, high-volume applications. our balanced hot runner allow for consistent cavity-to-cavity filling Hot runner undergoes melt channel sizing analysis where balance, shear rate and pressure drop are optimized.

- Manufacturing from high grade steel from japan and imported DIN1.2738 and DIN 1.2316 steel.
- Cap molds are designed with advanced taper positioning technology for concentricity of the product.
- Weight optimization for exciting closures and new developments.





BLOW MOLDS

Turn-key PET bottle project: unique bottle designing, prototyping, laboratory tests and blow mold set production allow to get your perfect PET bottle with required parameters

new unique concepts from idea to bottle on the shelf following global trends, market research branding, product naming, logos and labels, modification of the existing bottle shapes, new design adaptation to the existing filling line bottle scaling to other volumes 2D drawings and 3D renders of PET bottles.



Mold Set

- Blow molds for PET bottles volume from 0,1 to 40
- Blow molds for any rotary and linear PET blow molding machines
- Short lead times -5-axis CNC machining centers for molding surfaces processing of any complexity
- Option of molds anodizing

HDPE BLOW MOLDS

Our product range includes a wide range of HDPE blow mold for fuel booster, HDPE bottle blow mold 500 ml, HDPE plastic can mold 2 ltrs, HDPE blow mold 200 ml, HDPE juice bottle mold 180 ml and 500 ml HDPE round bottle mold 2 cavity and upto10 ltrs.



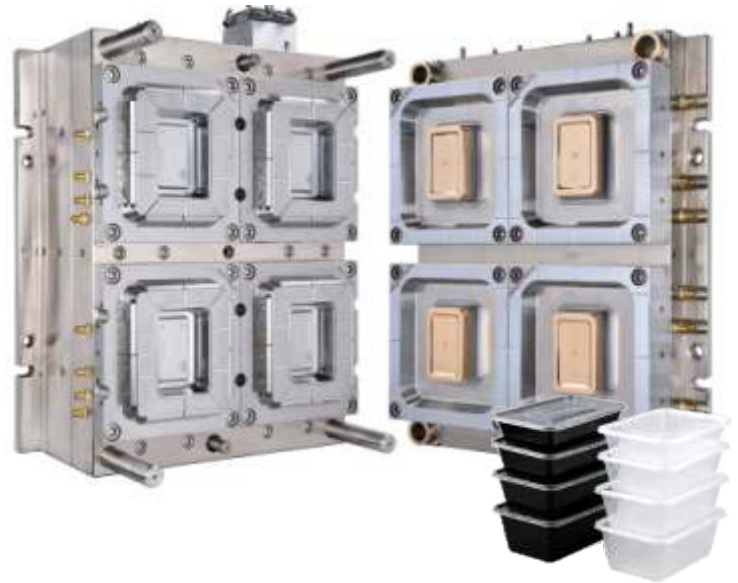


THIN WALL MOLDS

The company has recently added Thin Wall Container Molds and Blood Test Tube Molds to its Portfolio.

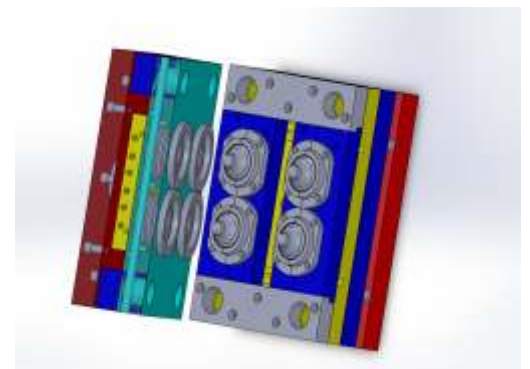
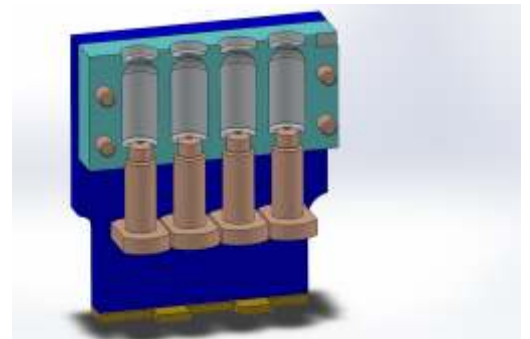
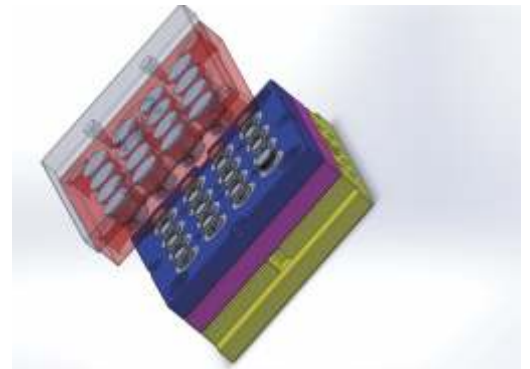
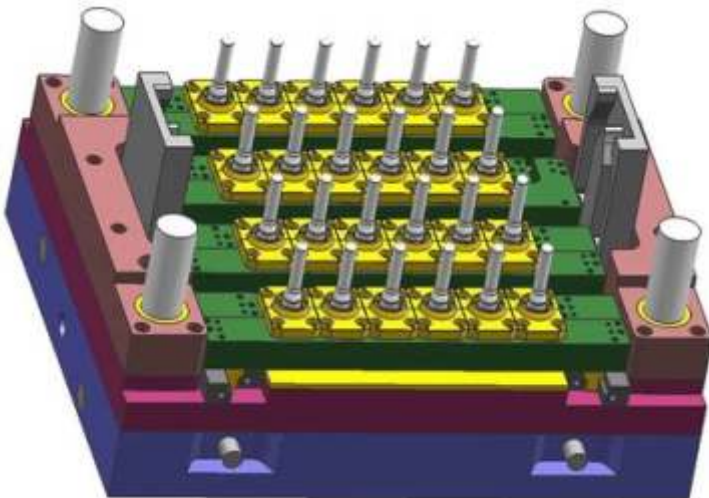
Thin Wall Container molds are designed for various packaging applications. With an optimum cycle time and brilliant finish these molds are highly useful for producing superior quality products.

- Light Weight Solutions
- Wall Thickness 0.3mm-0.5mm
- Wall Gated Runner Systems
- Optimum Strength with Precision



PREFORM, BOTTLE & JAR MOLDS DESIGNING

We provide Bottle and jar designing services from simple to most complex design of any volume range, We understand customer's demand, analyze feasibility of design and acceptability of design in the market. We use latest 3D designing software to increase design and productivity with advanced photorealistic rendering, automated cost estimation, Professional collaboration capabilities automated design and drawing checking features to meet requirements of customers.





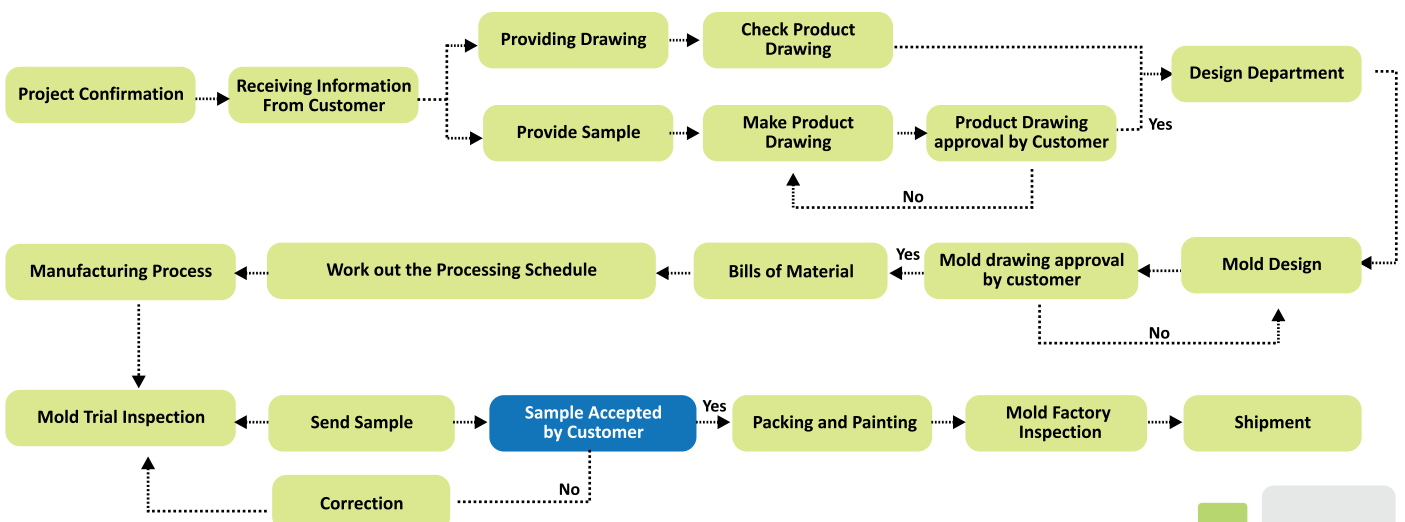
TOOL ROOM PROFILE

We have the engineering know-how capability and proven design standards to transform customer needs into a superior product.

Ashoka Tool Crafts' pursuit of excellence begins right at the design stage with DFMEA, Mould design reviews, DFM, Mould flow analysis by which we ensure an optimal design for the mould in terms of size, cycle time and maintenance. All this reflects on higher up time of the mould by which high productivity is assured.



PROCESS FLOW CHART





**Pocket O-16, Sector 1
Bawana Industrial Area, New Delhi-110039
Email: info@ashokatools.co.in
tools.ashoka@gmail.com**

**D-17, Sector-7, Noida-201301
U.P, Distt. G.B. Nagar
E-mail: royalmoldsanddies@gmail.com
Mobile : 9312208188 | 9891497787 | 9354700440 | 9319601404**